

# SESSION 05 NETWORKING



## **INSTRUCTOR**



**STEPHEN BECK PhD**

**Stephen** is a career church planter and church planting instructor. He has served with the Redeemer Church Planting network in Canada, more recently with Greater Europe Mission in Germany. He is considered one of the "cutting edge" Greater Europe Missionaries in this regard. He is Professor of Practical Theology at Freie Theologische Hochschule in Giessen, Germany. He has also been guest lecturer at a number of institutions on the European continent. He is married to Susan and they have four children. In 2011 Stephen and Susan embarked on yet another journey: together with 25 college students they planted a multi-everything church for the Frankfurt metro region. Through the refugee wave that came over Germany, this church multiplied to 15 congregations in 6 years.

## **GOALS**

The course is broken down into nine specific sessions. Each session will include a video lecture, course guide, and in some cases short assignments to help you grow. We encourage you to not only do this course on your own time, but with others who share the same passion to expand God's Kingdom.

## **SESSION OVERVIEW**

01 Introduction

02 Preparation & Conception

03 On Location First Steps

04 Contextualized & Contexed

**05 Networking**

06 Philosophy of Ministry

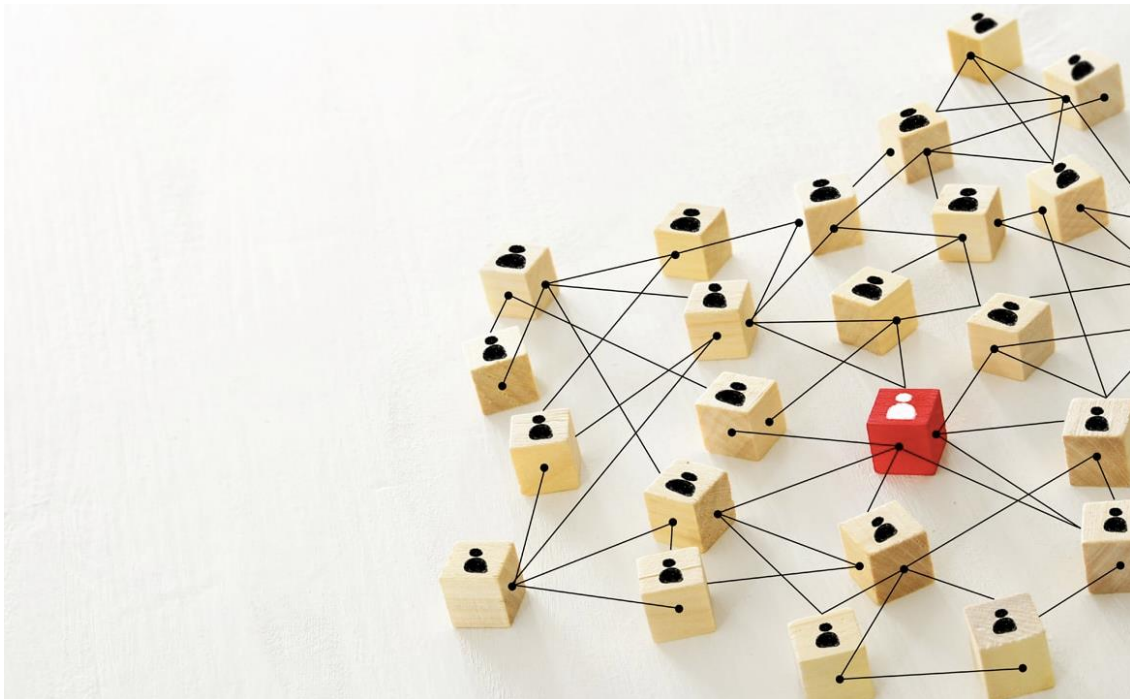
07 Starting Your Team

08 Birthing Phase of Your Church

09 Worship Service

## **Session Summary**

In this session Stephen will explain how Networking is one of the most essential things you need to do when starting your classical church plant. Thru networking you are bringing your church as the people of God into contact and partnership with the things in the city with whom God in His grace has already established for the help of the city.



## Session 05: Networking

### COUSE GUIDE - Fill in the Blank

1. One approach for networking is when you want to get to know the available \_\_\_\_\_ in your city.
2. When the righteous \_\_\_\_\_, the city rejoices. (Proverbs 11:10)
3. A second reason networking is critical, is that you want to know the people you want to reach in your church plant.
4. The \_\_\_\_\_ group for your church plant are the first people you want to begin to network with.
5. Do not let \_\_\_\_\_ tell you what kind of church will most effectively reach the non-church going people.
6. You want to begin to network with the \_\_\_\_\_ and the other Christian \_\_\_\_\_ in your city.
7. You want to gain the \_\_\_\_\_ of the pastors in your area whom you connect with.
8. \_\_\_\_\_ help organizations and groups are also key groups for networking.
9. Networking is all about asking \_\_\_\_\_ with others about their needs.

## REFLECTION QUESTIONS

1. What are four groups that you want to network proactively?
2. What are different questions you can ask when you begin to network with these different groups?

### PUTTING IT IN ACTION

1. Create a list of key groups or people in your city who has resources who can help you to eventually connect your team and church plant.
2. Begin to plan to start networking with these groups.
3. Commit to prayer over your network in the next week.